

PassleaderVCE

PassLeaderVCE

HOME

ALL VENDORS

★ GUARANTEE

? FAQ

TESTIMONIALS

CART (0)

Pass Your Next Certification Exam Fast!

Wonderful Certification Exam Guide and Exam Dumps - PassLeaderVCE

365 days free updates. First attempt guaranteed success.

Select a vendor...

Select an test...

Your email address

Free Download Demo

We're not the only ones **happy** about PassLeaderVCE Practice Material ...

49316+ customers in 100+ countries use PassLeaderVCE Test Engine. Meet our customers.

VOREED

GetCustom

JET ORANGE

iCompany

Paradoxx

iMessenger



<http://www.passleadervce.com/>

Wonderful Certification Exam Guide and Exam Dumps- PassLeaderVCE

Exam : HP0-W02

Title : Implementing HP Storageworks EVA Solutions

Vendors : HP

Version : DEMO

1.Which factor, in addition to storage and storage growth, is a typical driver for the implementation of Enterprise Virtual Array 8000 solutions?

- A.throughput
- B.data availability
- C.backup window
- D.management cost

Correct:A

2.What happens if an HSV controller reaches a critical temperature?

- A.Ungrouped disks are powered off.
- B.Cache is put in write-through mode.
- C.Unused host ports are deactivated.
- D.Array shuts down after 180 seconds.

Correct:B

3.You have a host connected to an EVA6000 using two HBAs. You find that the EVA is only accessible through one HBA. What are the possible causes? (Select three.)

- A.There is a faulty FC cable.
- B.The Fabric is not properly zoned.
- C.One HSV controller is powered off.
- D.Virtual disk properties are set for no failback.
- E.The wrong HBA WWID was added to the host-defined ports.

Correct:A B E

4.When a cache battery fails on and EVA8000, why is it important to replace this as soon as possible?

- A.No units will be presented if the second battery also fails.
- B.Primary controller is disabled until cache battery is replaced.
- C.Secondary controller owns all units until battery status changes.
- D.The cache works in write through mode on the primary controller.

Correct:A

5.Which replication method could cause an overcommit situation? (Select two.)

- A.clone
- B.Vsnap
- C.snapclone
- D.fully allocated snapshot
- E.demand-allocated snapshot

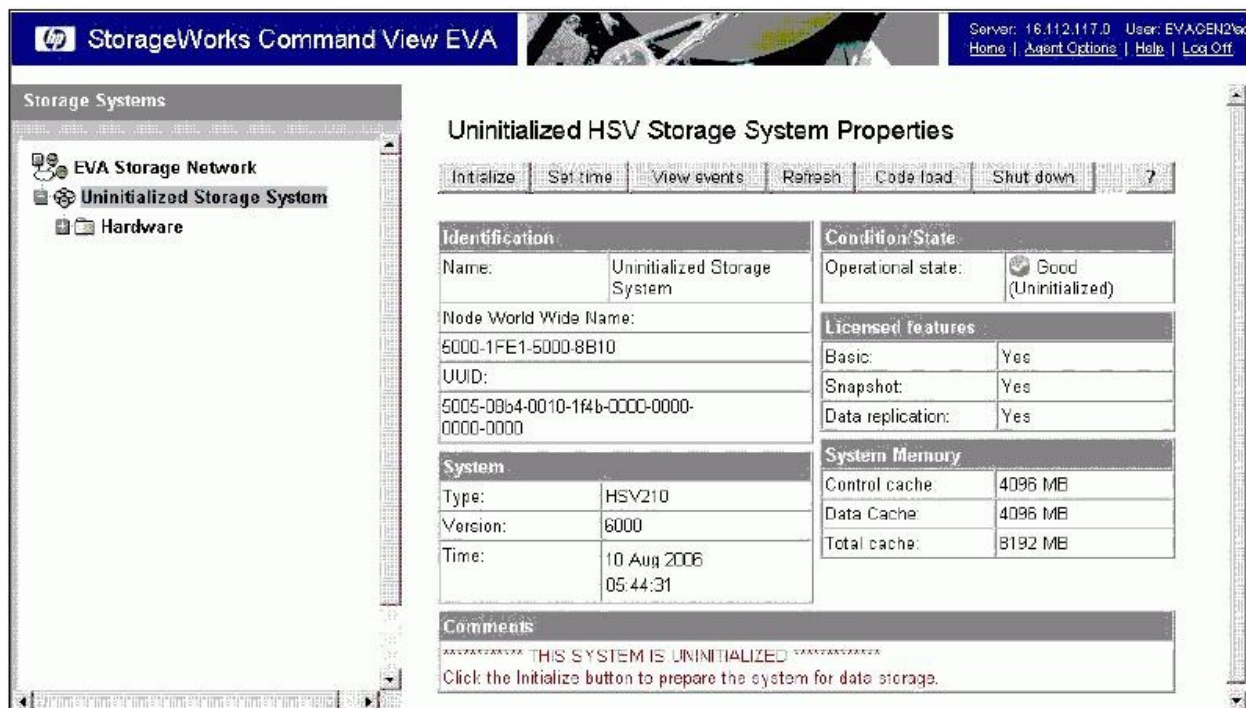
Correct:B E

6.The occupancy alarm level on an EVA4000 containing one disk group is set to 90%. When will an event be generated on the Command View EVA management station?

- A.when a virtual disk is filled above 90%
- B.when 90% of space is allocated on a single disk
- C.when 90% of disk slots are occupied in the array
- D.when usage of disk space within the disk group is above 90%

Correct:D

7.Click the Exhibit button. Which EVA product is being implemented?



- A.EVA3000
- B.EVA5000
- C.EVA4000
- D.EVA6000
- E.EVA8000

Correct:E

8.How many PSEGs are used in a Vraid5 Rstore?

- A.3+1
- B.3+2
- C.4+1
- D.4+2
- E.4+3

Correct:C

9.Which tool is used to implement redundant paths to a Vdisk from an EVA4000/6000/8000 on an HP-UX system?

- A.SAM
- B.altPath
- C.PVlinks
- D.MPIO DSM

Correct:C

10.What is a characteristic of Vraid0? (Select three.)

- A.4+0 PSEGs per Rstore
- B.4 +4 PSEGs per Rstore
- C.good read and write access
- D.no disk failure data protection
- E.single disk failure data protection

F.good read and poor write access

Correct:A C D

11.What happens when I/O requests are issued to a Vdisk on the non-owning controller? (Select two.)

- A.I/O requests issued have no performance impact.
- B.A read request issued has no performance impact.
- C.A write request issued has no performance impact.
- D.A read request issued has a higher performance impact.
- E.A write request issued has a higher performance impact.

Correct:C D

12.You connect a 0C6D expansion rack to a fully equipped 2C12D rack. What is the maximum number of disk drives that can be added to achieve a supported configuration?

- A.56
- B.60
- C.72
- D.84

Correct:C

13.What causes the first write overhead on an Enterprise Virtual Array?

- A.Vraid1
- B.Vdisk diagnosis
- C.metadata update
- D.controller intercommunication

Correct:C

14.Which component in an EVA4000 subsystem is responsible for bypassing failed disk drives?

- A.fibre channel loop switch
- B.disk drive enclosure I/O module
- C.the Array controller (HSV controller)
- D.environmental monitoring unit (EMU)

Correct:B

15.How many concurrent disk drive failures with an RSS could be covered with a double disk failure protection level?

- A.0
- B.1
- C.2
- D.4

Correct:A

16.From which page would you display the loop switch property?

- A.from the rack property page
- B.from the controller property page
- C.you can not display the information
- D.from the disk enclosure property page

Correct:C

17.A customer wants to purchase a new Business Copy license for their EVA. What is the snapshot license policy based on?

- A.number of planned snapshots
- B.usable capacity of the storage in the EVA
- C.usable capacity of the virtual disks replicated
- D.usable capacity of the planned snapshots/snapclones

Correct:C

18.Which attributes are required to create a Vdisk container in Command View EVA? (Select three.)

- A.size
- B.name
- C.spare capacity
- D.redundancy level
- E.access control list
- F.source virtual disk

Correct:A B D

19.Through which interfaces can you enter the storage system name on a new EVA? (Select two.)

- A.Command View EVA
- B.Operator Control Panel (OCP)
- C.Environmental Monitoring Unit (EMU)
- D.Replication Solutions Manager (RSM)
- E.Storage System Scripting Utility (SSSU)

Correct:A E

20.A Vraid5 virtual disk has been created in a 12-member disk group. What is the result of the loss of one disk?

- A.reordering of disks in each RSS
- B.reduction in the number of RSSs
- C.no change in the number of RSSs
- D.addition of a new Redundant Storage Set (RSS)

Correct:B